

Elements

by Boutique Homes

Hudson 22 Cove Façade.
Price From \$892,500

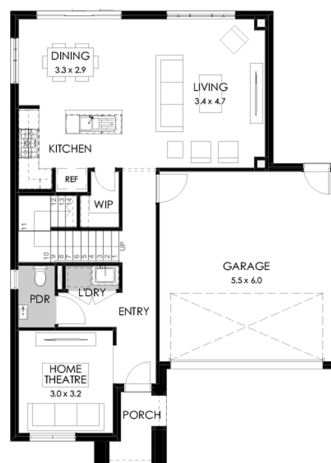


Lot 107 Verdenia Drive Greenvale Dunhelen Estate

Land size: **386m²**

Home Size: **197.12m²**

- Fixed site costs
- Stylish façade
- Double glazed thermally broken awning windows
- Quality flooring throughout
- 2400mm high ceilings
- 900mm Westinghouse kitchen appliances
- 20mm stone benchtops to kitchen
- Quality chrome or matt black tapware throughout
- Quality Dulux paint
- 25 Year Structural Guarantee & 12 Month Maintenance
- 7-Star energy rating
- Fibre Optic Connection
- Recycled Water Connection



Ground floor



First floor

YOUR LOCAL NEW HOMES CONSULTANT

Richard D'Ademo 0400 442 442 | rdademo@boutiquehomes.com.au

DUNHELEN

GREENVALE

Price based on floorplan & façade shown and on builder's preferred siting. Image used is an artist impression for illustrative purposes only and shows 2400mm high ceilings plus decorative items not included in the price shown including path, fencing, landscaping, coach lights and furnishings. Fixed pricing means that, subject to the terms of this disclaimer and any owner requested changes, the price advertised will be the price contained in the building contract entered into and this price will not charge other than in accordance with the building contract. The price is based on developer supplied engineering plans and plans of subdivision and final pricing may vary if actual site conditions differ to those shown in these developer supplied documents. Block and building dimensions may vary from the illustration and the details shown. For more information on the pricing and specification of this home please contact a New Homes Consultant. AS/NZ Group Victoria has permission of the owner of the land to advertise the land as part of the price specified. The price does not include transfer duty, settlement costs, community infrastructure levies imposed or any other fees or disbursements associated with the settlement of the land.