



ARCHIE 226

\$811,300

**Lot 104 Verdenia Drive
Greenvale**

4  **2**  **2** 

Mimosa Homes Proudly Presents

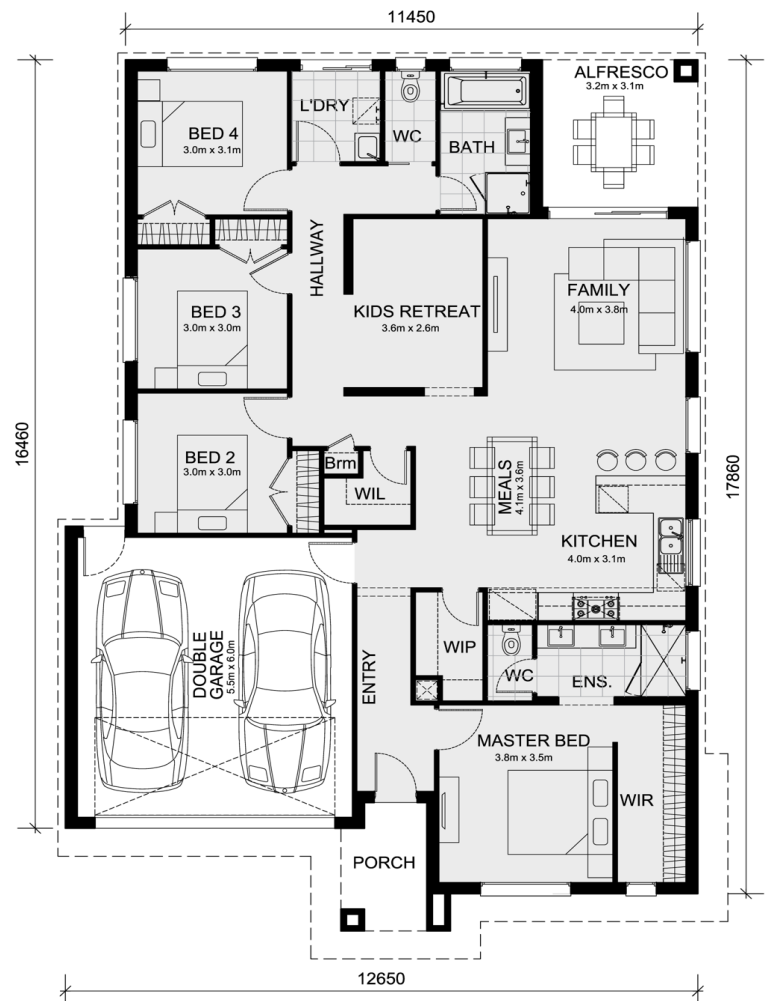
The Archie 226 House and Land Package!
* Mimosa Homes Added Value Inclusions:

- Inclusive of site costs & connections!
- Quality floor coverings throughout entire home!
- Higher ceilings 2550mm to ground floor!
- Double Glazed Awning windows
- Downlights to living areas!
- Vitrified Compact Surface benchtop to kitchen!
- High Quality appliances!
- Remote control panel sectional lift garage door!
- 7 Star Energy Rating with Solar hot water!
- Flexible floor plans & so much more!

CALL BUILDER DIRECT!

NAP MADRIAGA 0427631471

All plans and facades are indicative only and may change. Mimosa Homes may amend plans, specifications, and prices without notice. Package prices are based on a standard facade, standard inclusions, and suitable land availability, excluding developer/estate requirements. Facade and inclusion images may show non-standard items not included in the price. Dimensions are approximate. Landscaping, fencing, decking,



Area Details

Land Size 392sqm Building Size 208sqm

Contact: **Nap Madriaga**
nap@mimosahomes.com.au

0427 631 471
www.mimosahomes.com.au